

Technical Bulletin

Clutch Cover & Clutch Disc

Vehicle Type

Mahindra & Mahindra 240 dia

Part Number

843582, 843586, 843610, 843625

Design Difference Comparison between M&M 240dia clutch sets and LuK clutch set

The Problem

Mahindra & Mahindra 240 dia applications 843582, 843586, 843610, 843625 will have a design difference when compared to OES (LUK).

Design Difference Comparison Details: Valeo vs LuK

- Finger Height of Valeo Clutch cover is higher when compared with LuK clutch cover

Before assembling on Flywheel

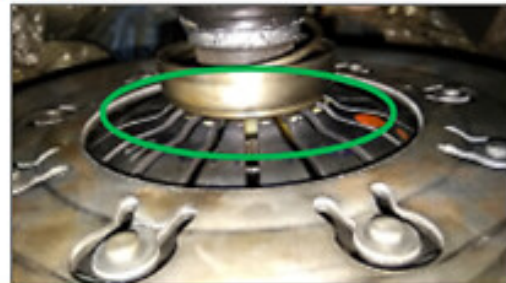
Valeo



LuK



After assembling on Flywheel



1. Before assembling on the Flywheel there will be height difference between both cover assy
2. After assembling on the flywheel both bearing height will be in same level.

- Diaphragm finger - bearing seating area is not similar

Valeo Before assembling on the Flywheel LuK



After assembling on the Flywheel



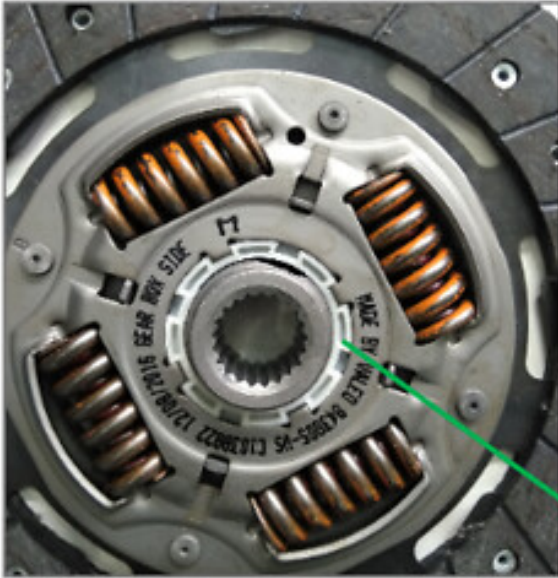
Bearing contact point



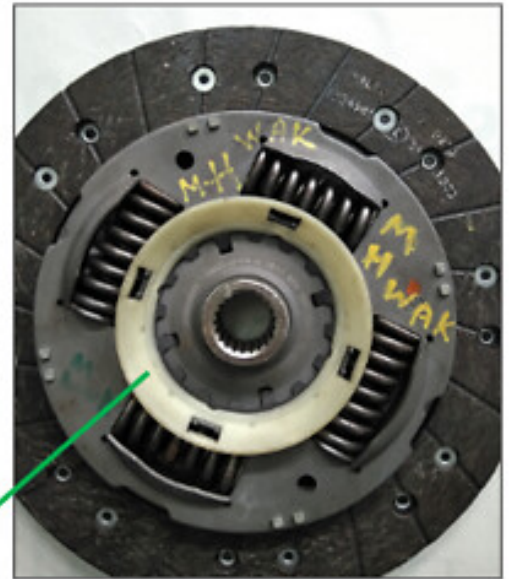
- After assembled condition both cover assy on the Flywheel bearing contact point is same
- Release Bearing will not go inside the Diaphragm finger

- Hysteresis washer (plastic washer) design is different

Valeo



LuK



Friction washer

- Both plastic washer are designed to contribute in order to control idle noise
- In Valeo design plastic washer kept Inside
- In LuK design plastic Washer kept outside